

# Experiment line: Software Reuse in Scientific Workflows

Eduardo Ogasawara<sup>1</sup>

Carlos Paulino<sup>1</sup>

Leonardo Murta<sup>2</sup>

Cláudia Werner<sup>1</sup>

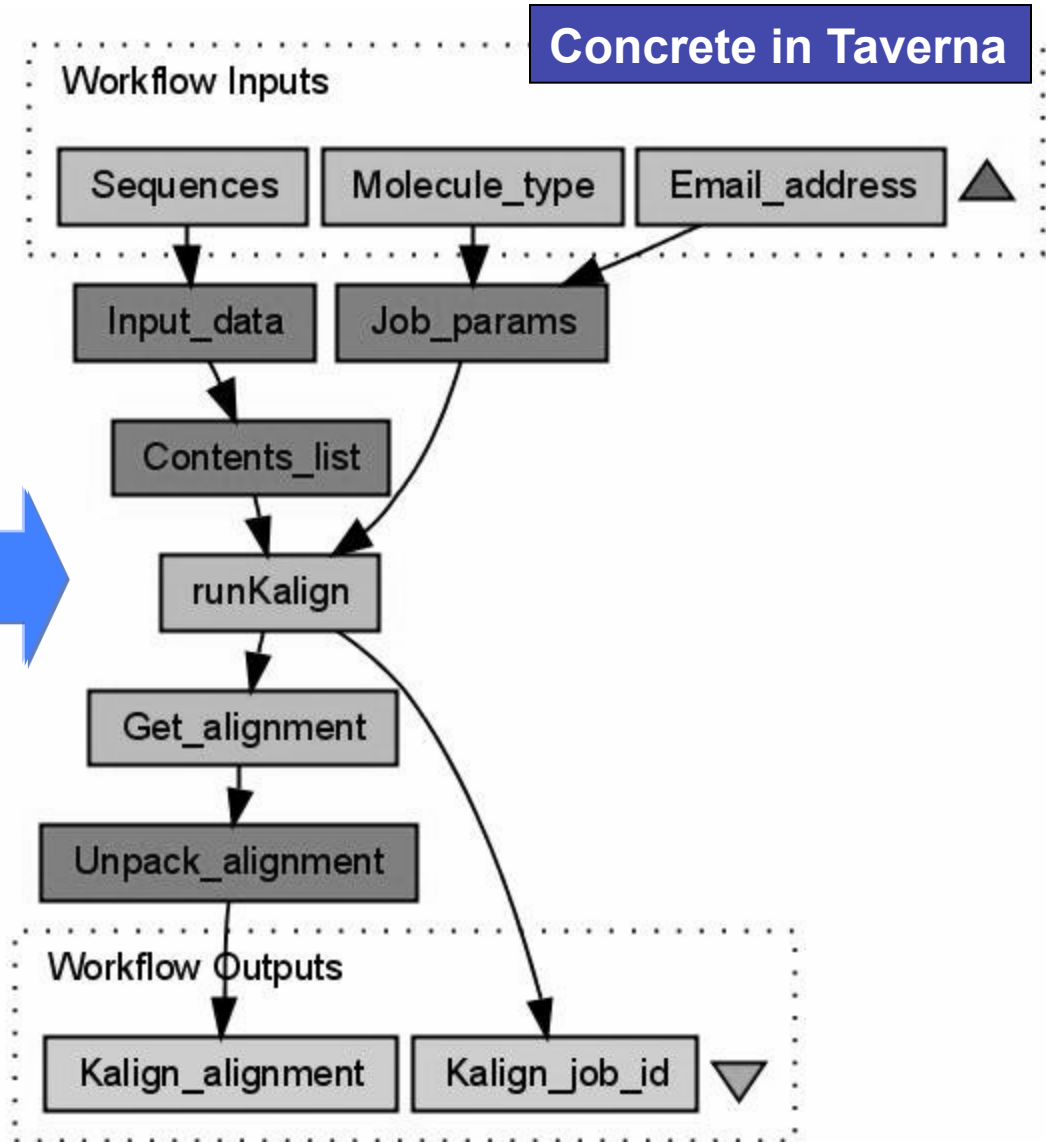
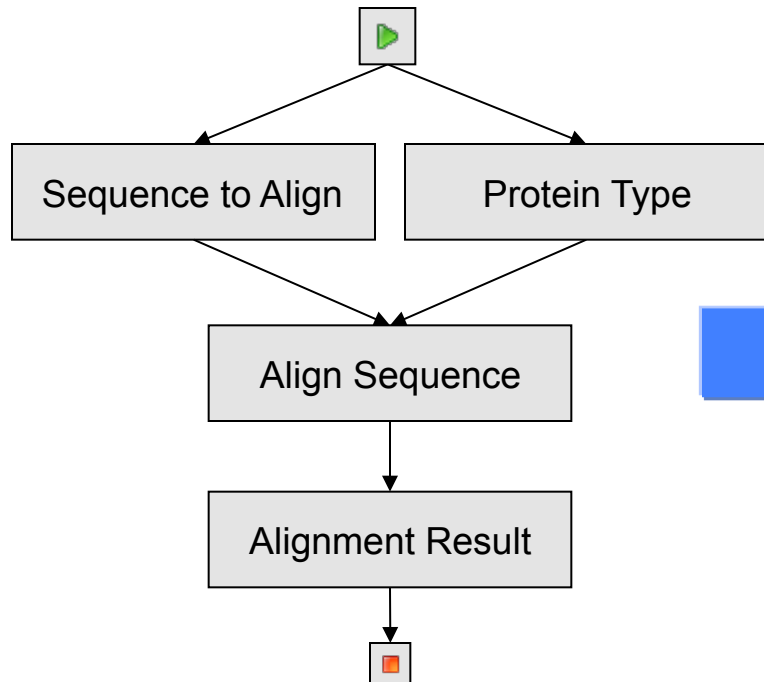
Marta Mattoso<sup>1</sup>

<sup>1</sup>Federal University of Rio de Janeiro

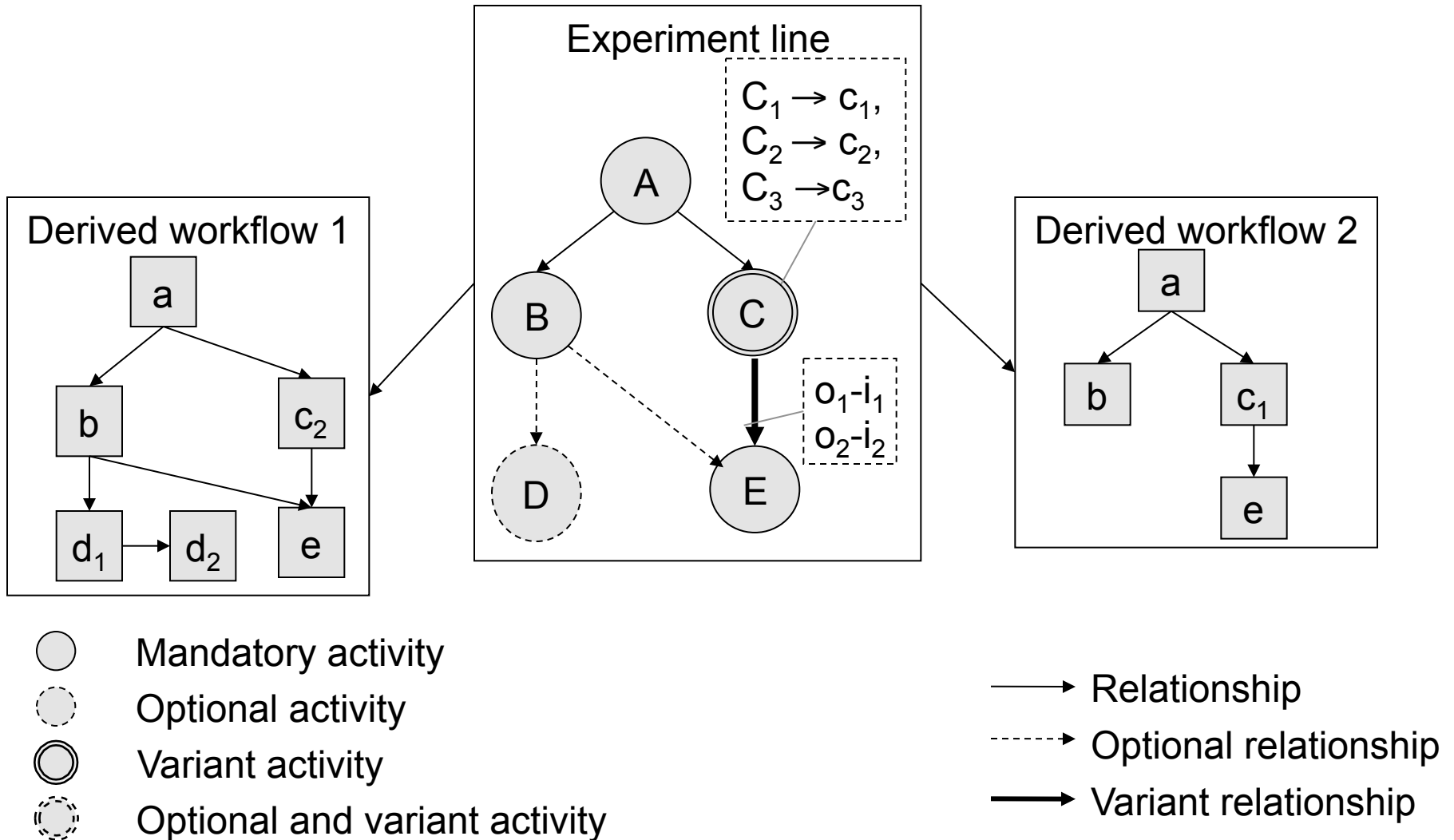
<sup>2</sup>Fluminense Federal University



# Abstract and Concrete Workflows

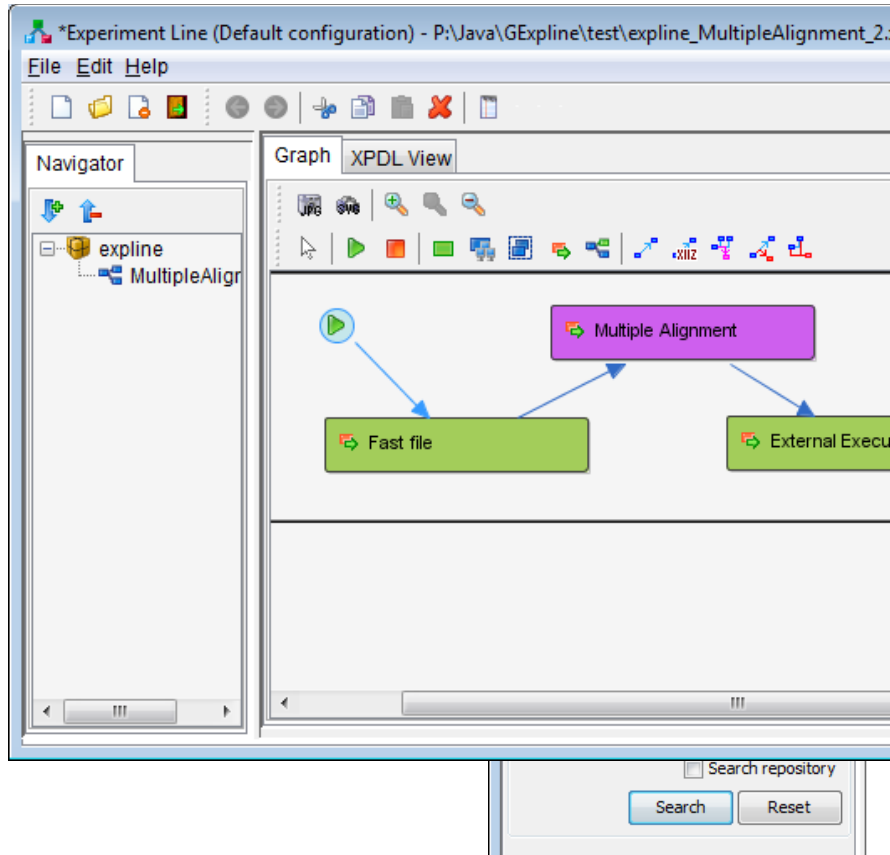


# Experiment life derivation



# GExpLine Tool

- Collaborative framework
- Systematic approach for the composition of scientific workflows



- Compose a workflow using guided information based on software reuse
- Improve maintenance efforts
- Support prospective provenance

